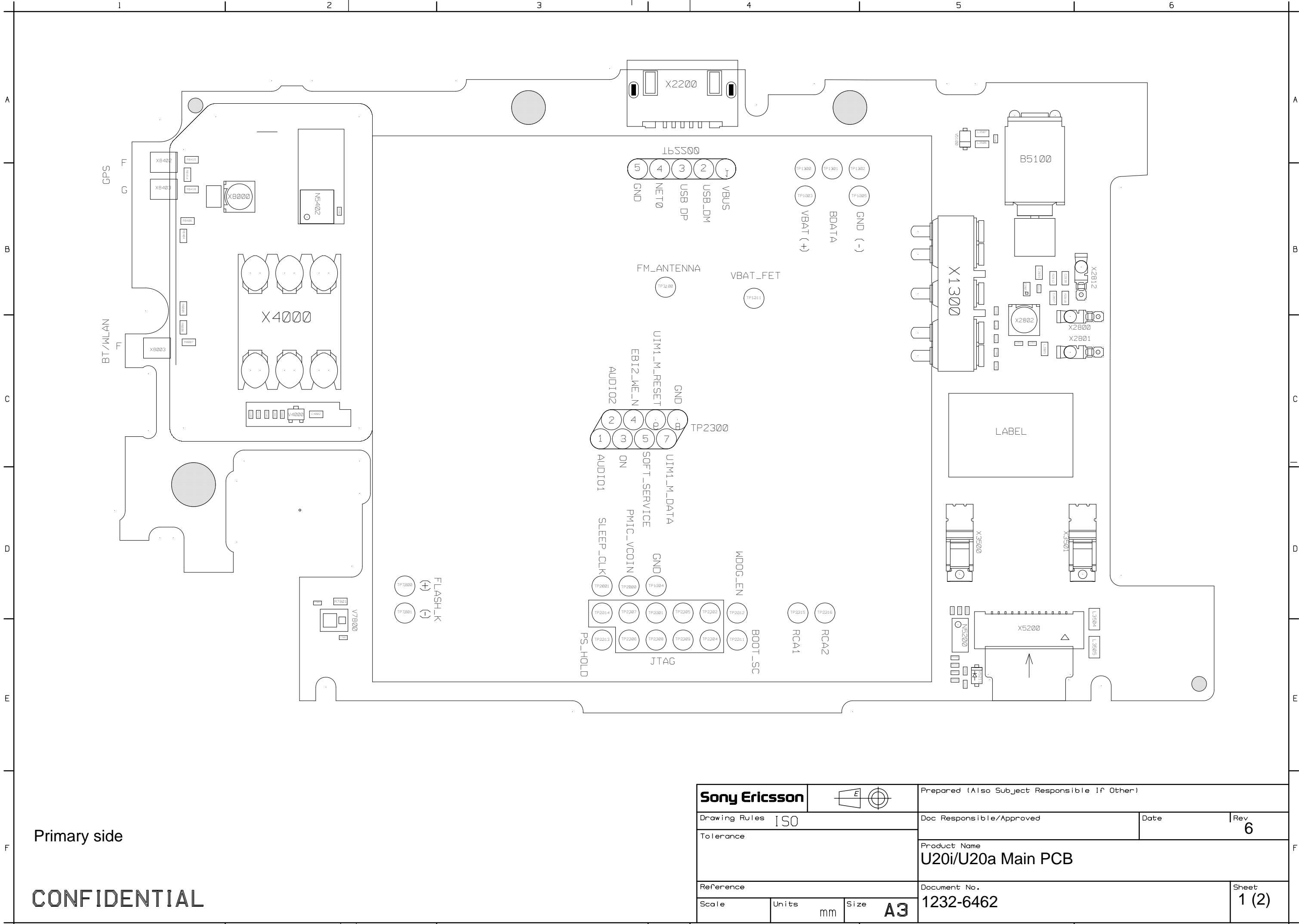


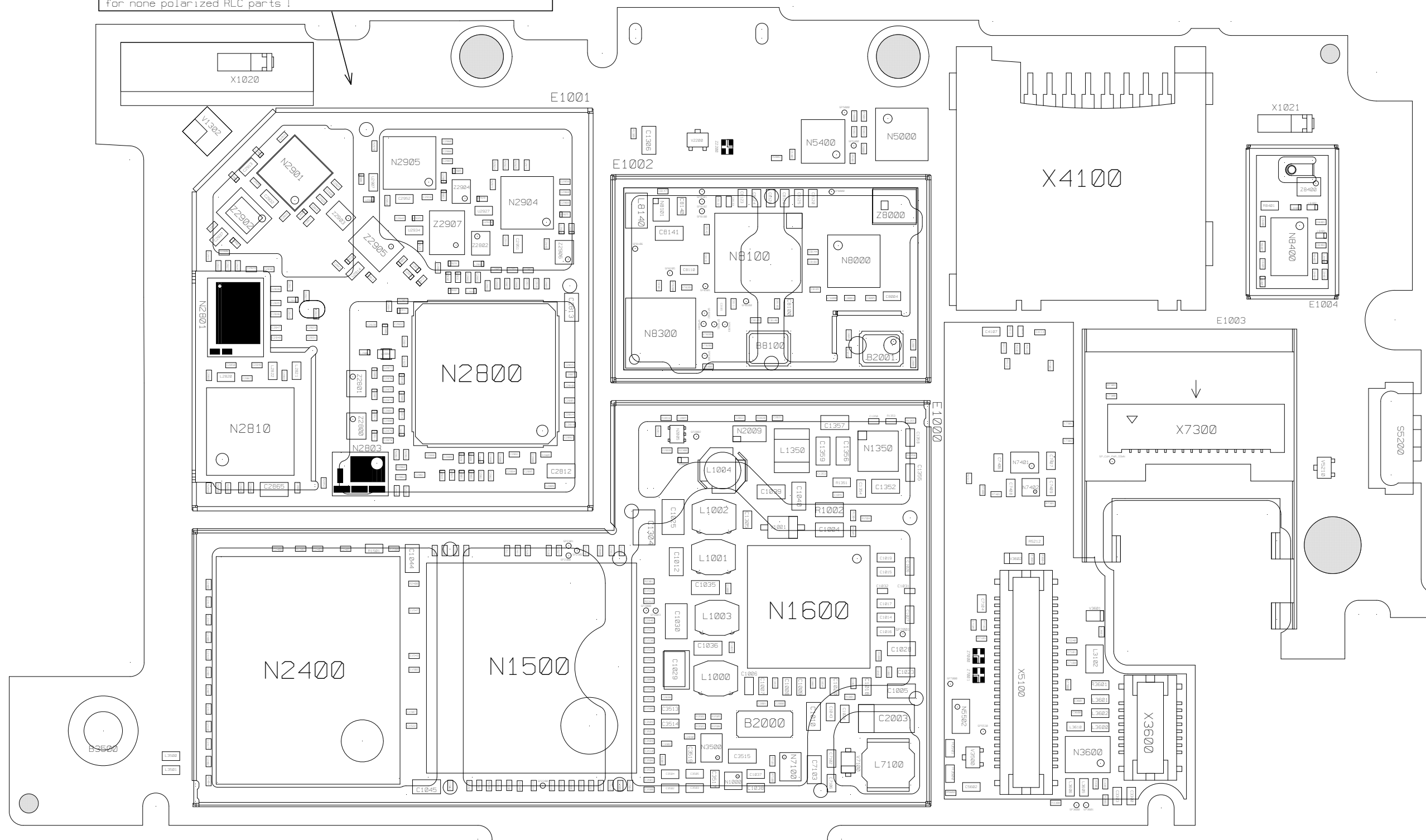
Schematics, Electrical

Applicable for Xperia X10 mini pro, U20i, U20a




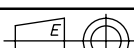
Sony Ericsson			Prepared (Also Subject Responsible if Other)		
Drawing Rules ISO			Doc Responsible/Approved		Date
Tolerance			Product Name		
Reference			Document No.		
Scale		Units	Size		Sheet
		mm	A3		1 (2)
			Rev		
			6		
			U20i/U20a Main PCB		
			1232-6462		

Note: Reference Designators with Uxxxx shows polarization marks, this is only valid for polarized Inductors and not applicable for none polarized RLC parts !



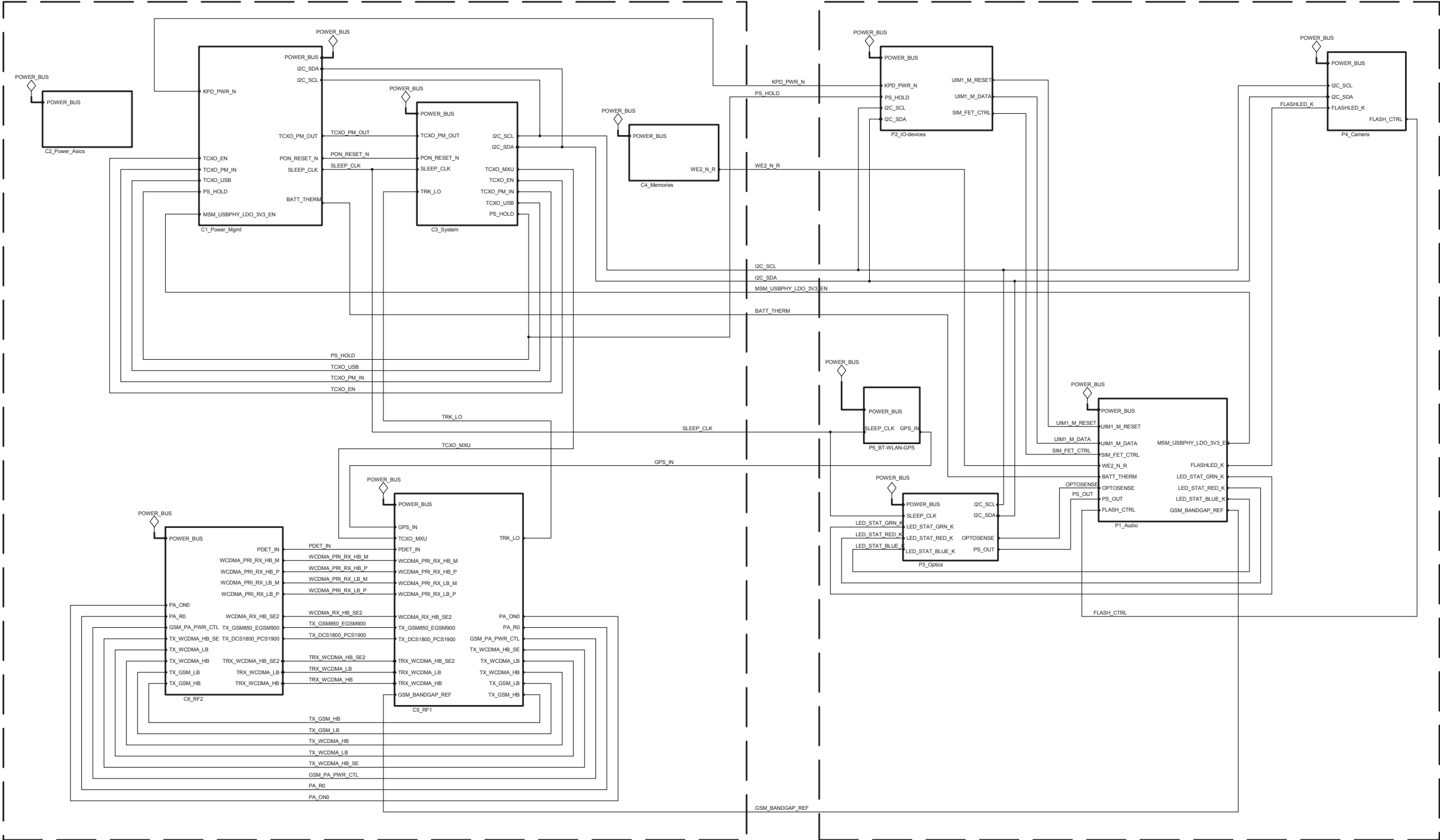
Secondary side

CONFIDENTIAL

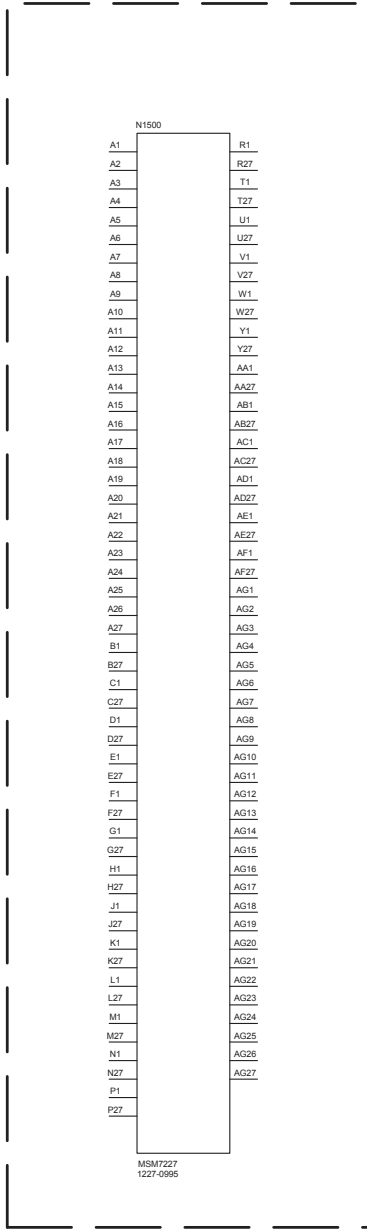
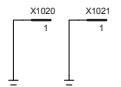
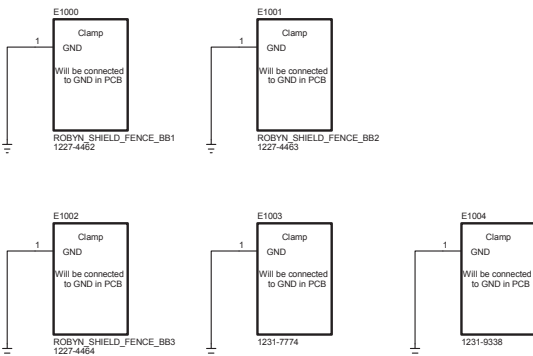
 		Prepared (Also Subject Responsible If Other)	
Drawing Rules ISO		Doc Responsible/Approved	Date
Tolerance		Product Name	Rev
		U20i/U20a Main PCB	6
Reference		Document No.	Sheet
Scale	Units mm	Size	
		1232-6462	2 (2)
	A3		

Core

Peripheral



Shield Cans



Confidential

CIRCUIT DIAGRAM

Sony Ericsson



Prepared (also subject responsible if other)

Block

Document responsible

X10 mini pro
Mainboard Schematic

Document responsible/Approved

Page
X10 mini pro Top

Project/Commercial name
X10 mini pro (1,8)

Type nbr/FCC/IC number

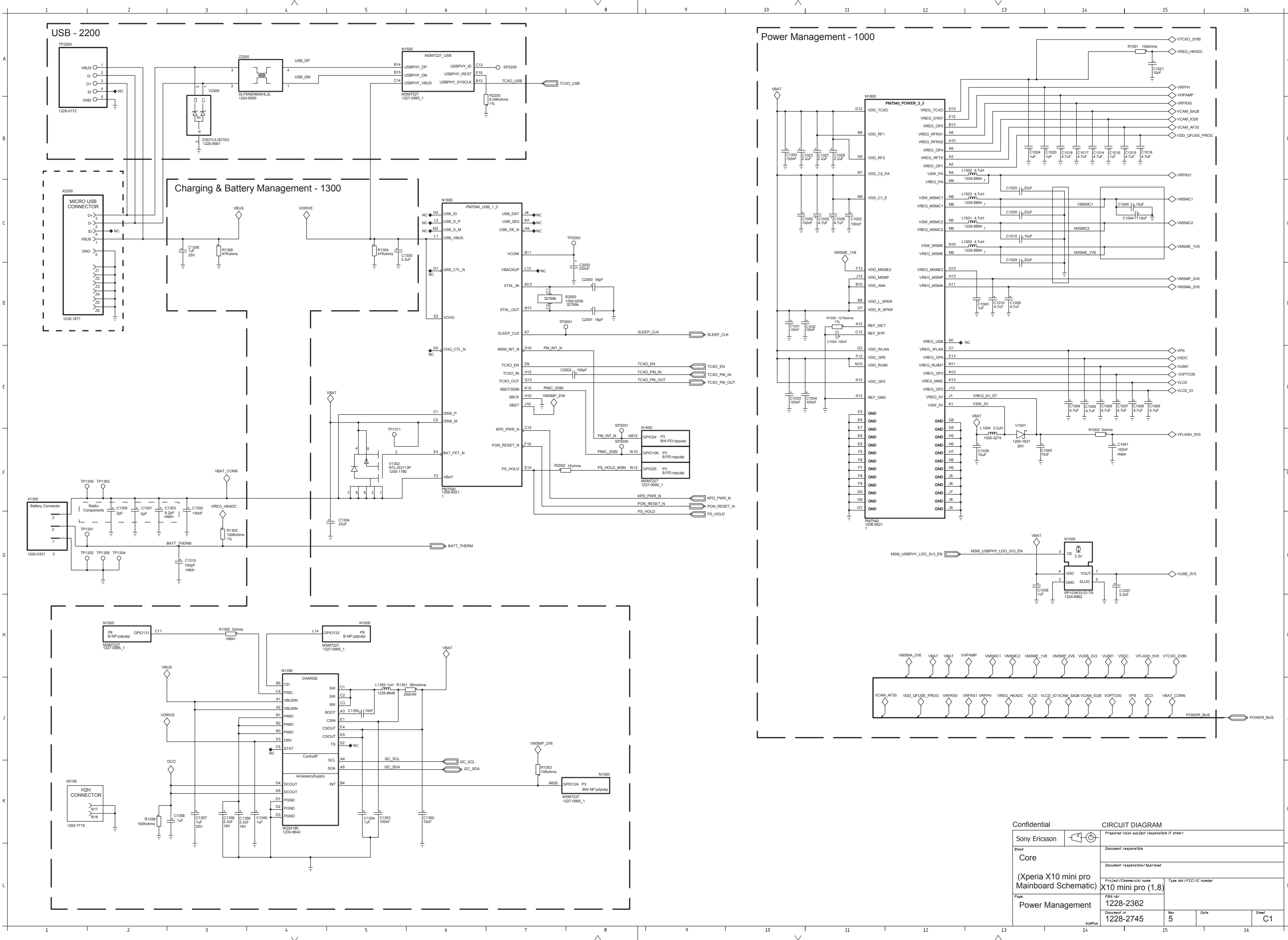
PBA nbr
1228-2362

Document nr
1228-2745

Rev
5

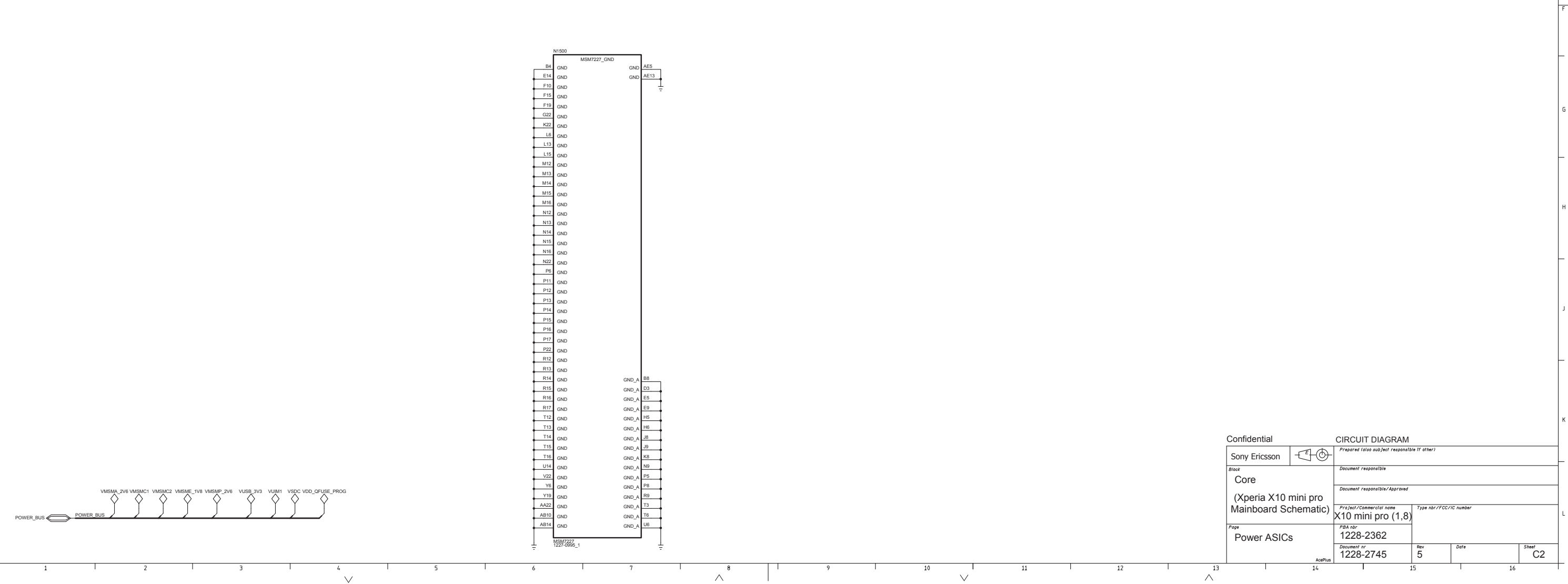
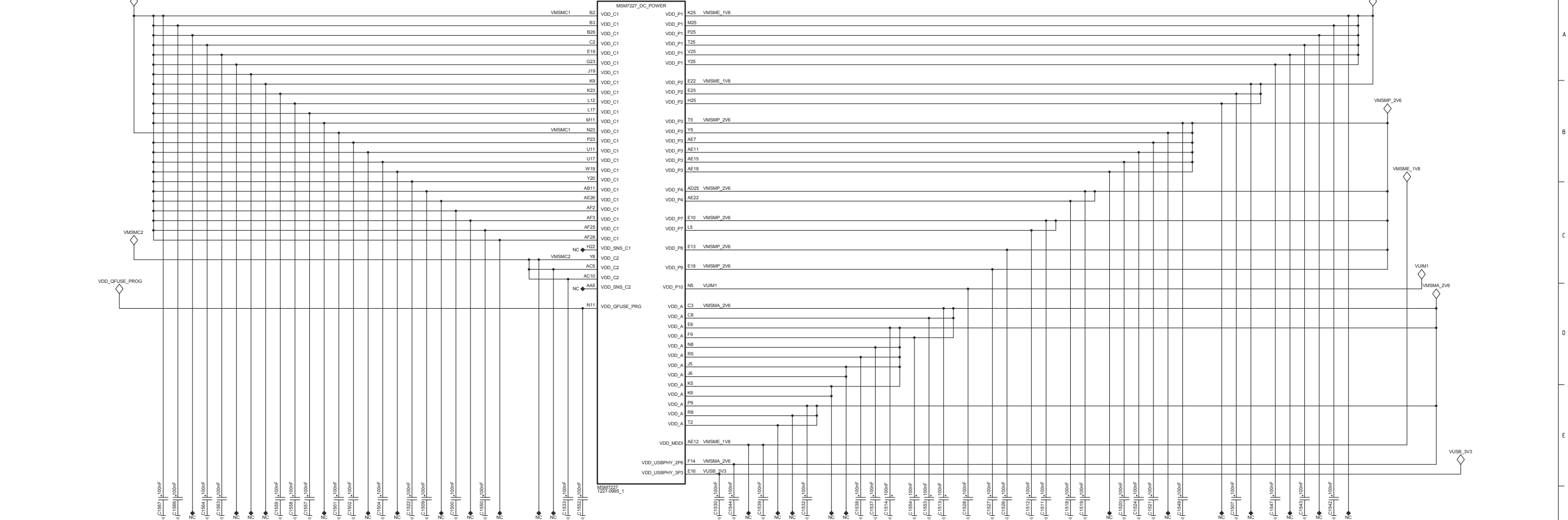
Date

Sheet
Top

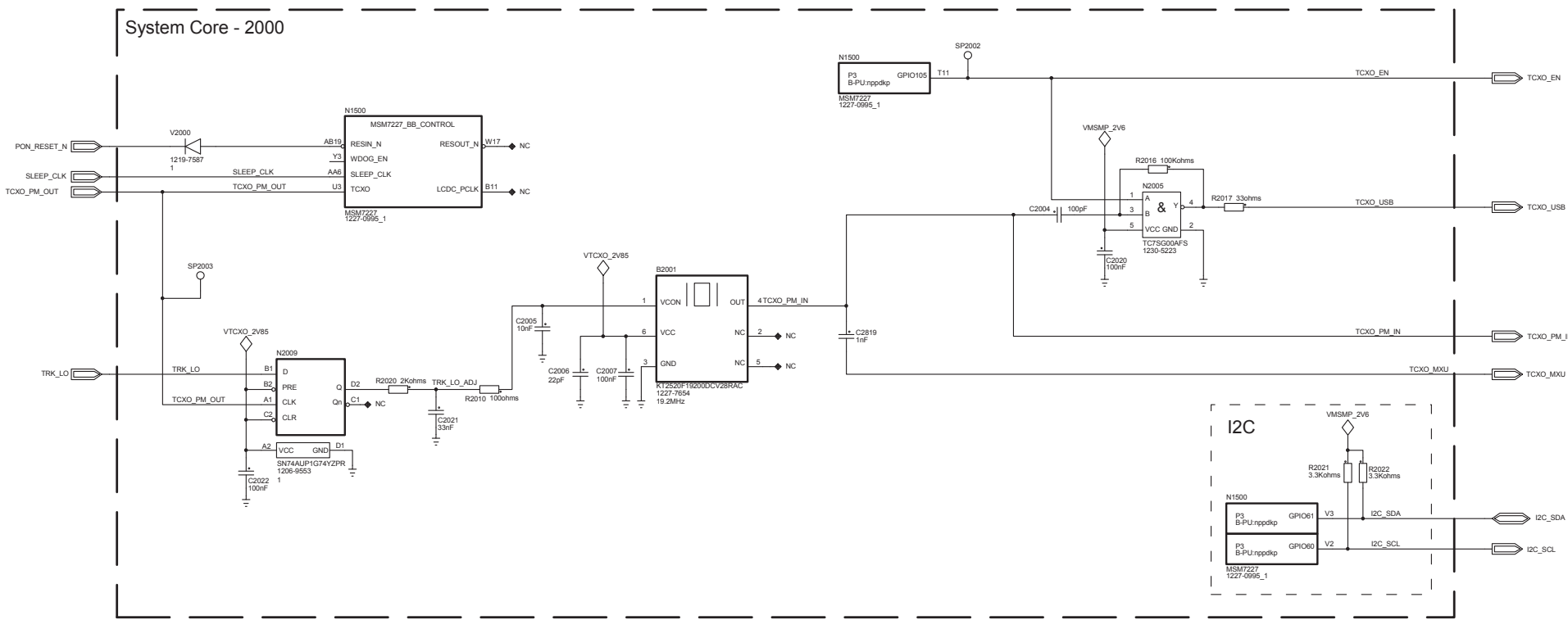


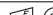
Confidential		CIRCUIT DIAGRAM	
Sony Ericsson		Prepared (also subject responsible if other)	
Block		Document responsible	
Core		Document responsible/Approved	
(Xperia X10 mini pro)		Project/Commercial name	
Mainboard Schematic		X10 mini pro (1,8)	
Page		PBA nbr	
Power Management		1228-2362	
		Document nr	
		1228-2745	
		Rev	Date
		5	
		Sheet	C1

DB Decoupling - 1500



Confidential		CIRCUIT DIAGRAM			
Sony Ericsson		Prepared (also subject responsible if other)			
Block		Document responsible			
Core		Document responsible/Approved			
(Xperia X10 mini pro Mainboard Schematic)		Project/Commercial name		Type nbr/FCC/IC number	
Page		PBA nbr			
Power ASICs		1228-2362			
		Document nr		Rev	Date
		1228-2745		5	
				Sheet	C2

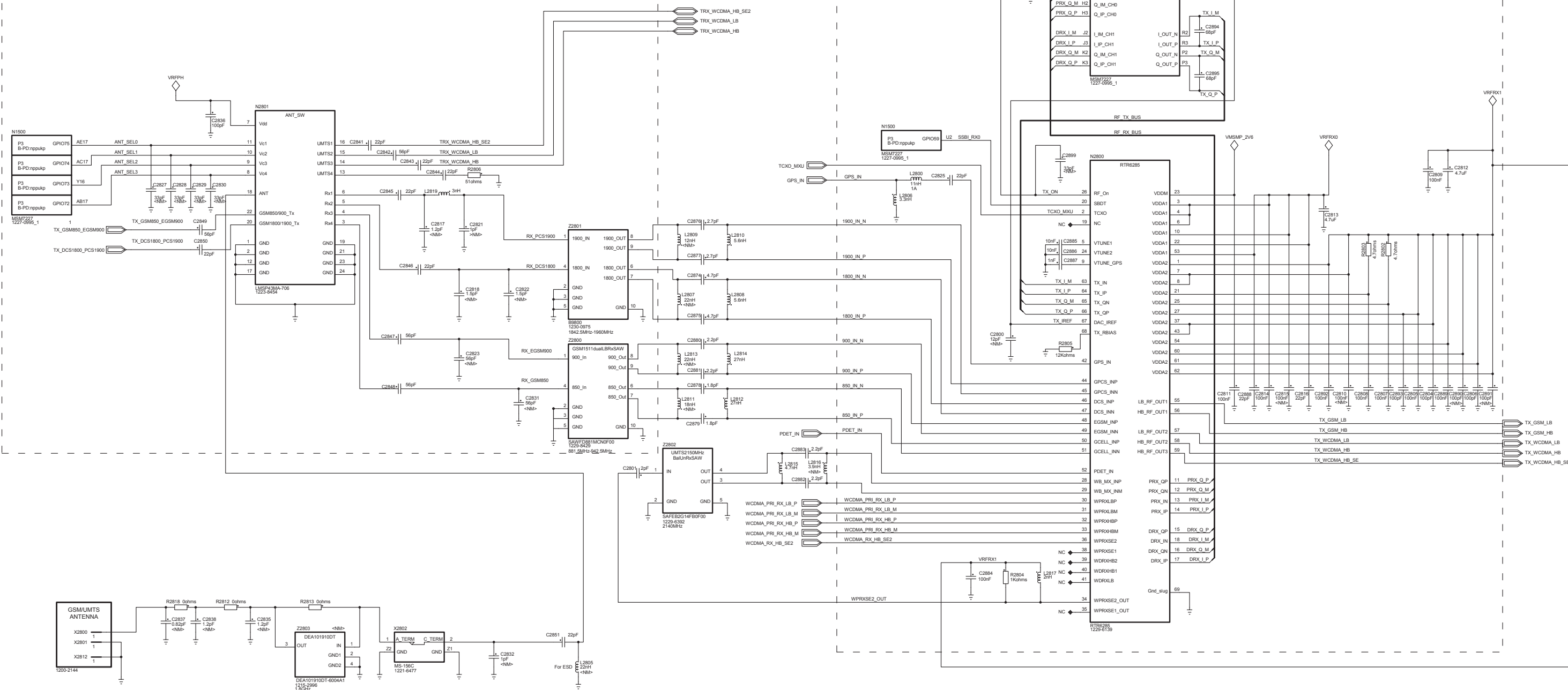


Confidential		CIRCUIT DIAGRAM			
Sony Ericsson				Prepared (also subject responsible if other)	
Block		Document responsible			
Core		Document responsible/Approved			
(Xperia X10 mini pro Mainboard Schematic)		Project/Commercial name		Type nbr/FCC/IC number	
X10 mini pro (1,8)		PBA nbr			
Page		1228-2362			
System		Document nr		Rev	Date
1228-2745		5			Sheet
AcerPlus				C3	

GSM/EDGE/Common - 2800
UMTS - 2900

Antenna Switch & GSM Rx SAW Filters

I Transceiver Module



Confidential

Sony Ericsson



CIRCUIT DIAGRAM

Prepared (also subject responsible if other)
--

	<i>Block</i>

Block
Core

(Xperia X10 mini pro
Mainboard Schematic)

	Project/Commercial name
--	-------------------------

Type nbr/FCC/IC number

Page

	PBA nbr

1228-2362

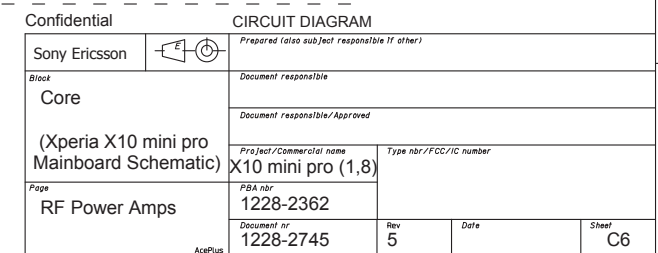
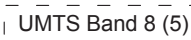
Rev	
-----	--

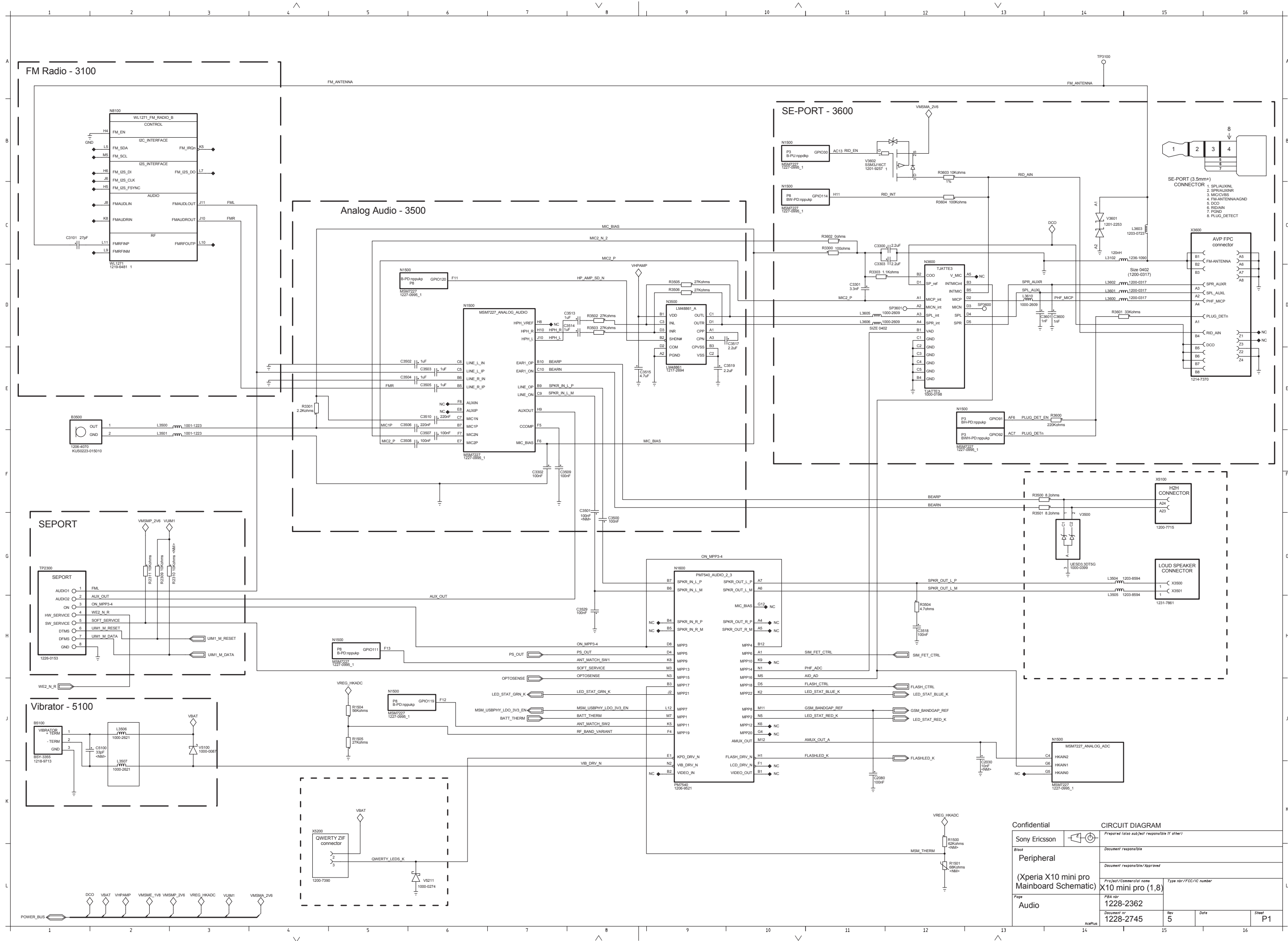
	<i>Date</i>
--	-------------

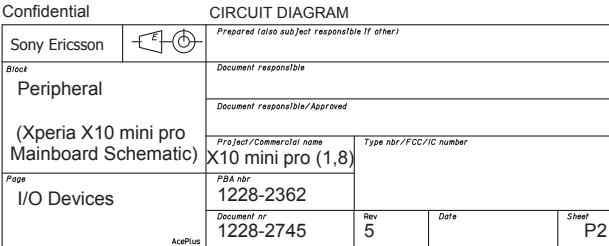
Sheet

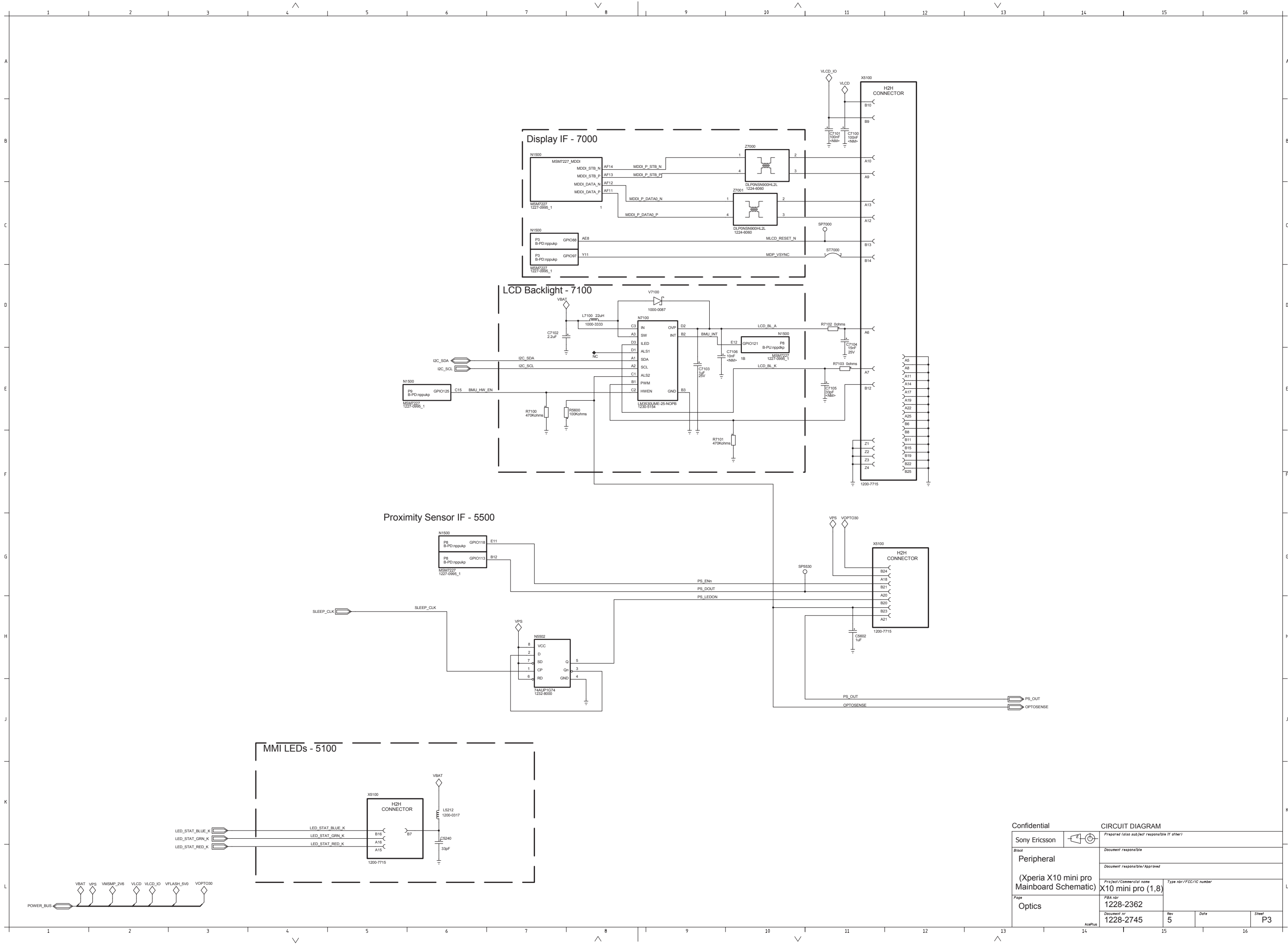
C5

GSM/EDGE/Common - 2800
UMTS - 2900

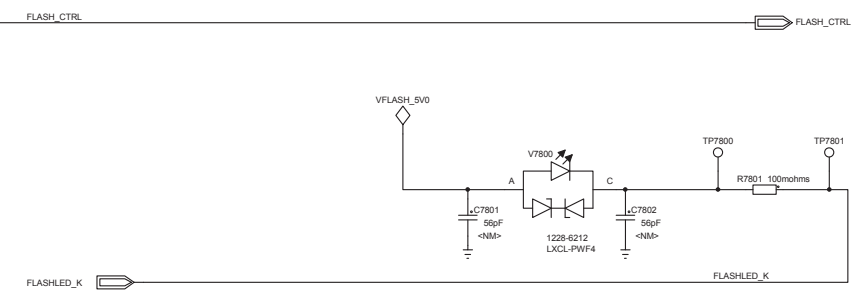
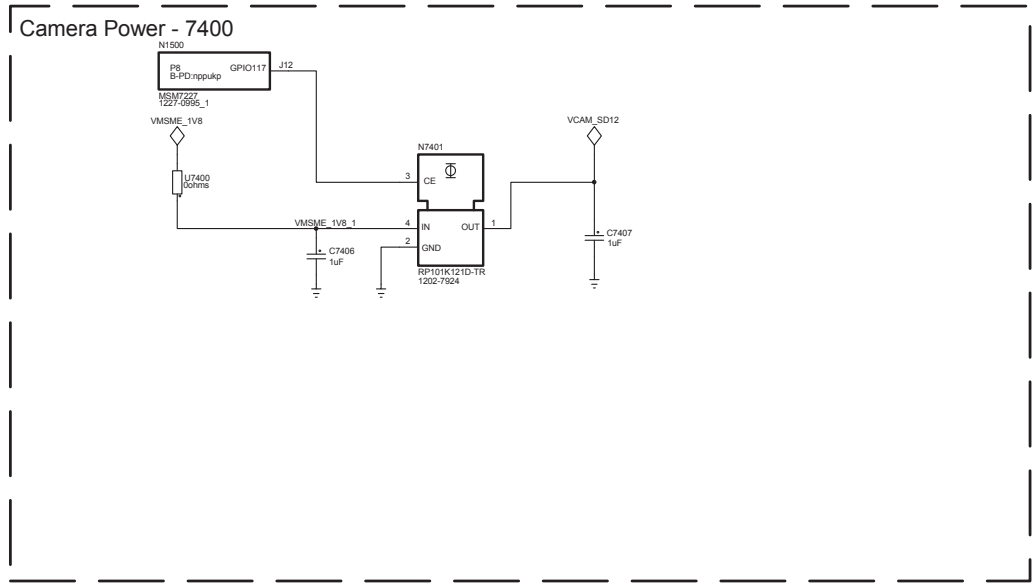
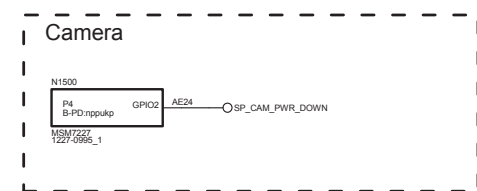
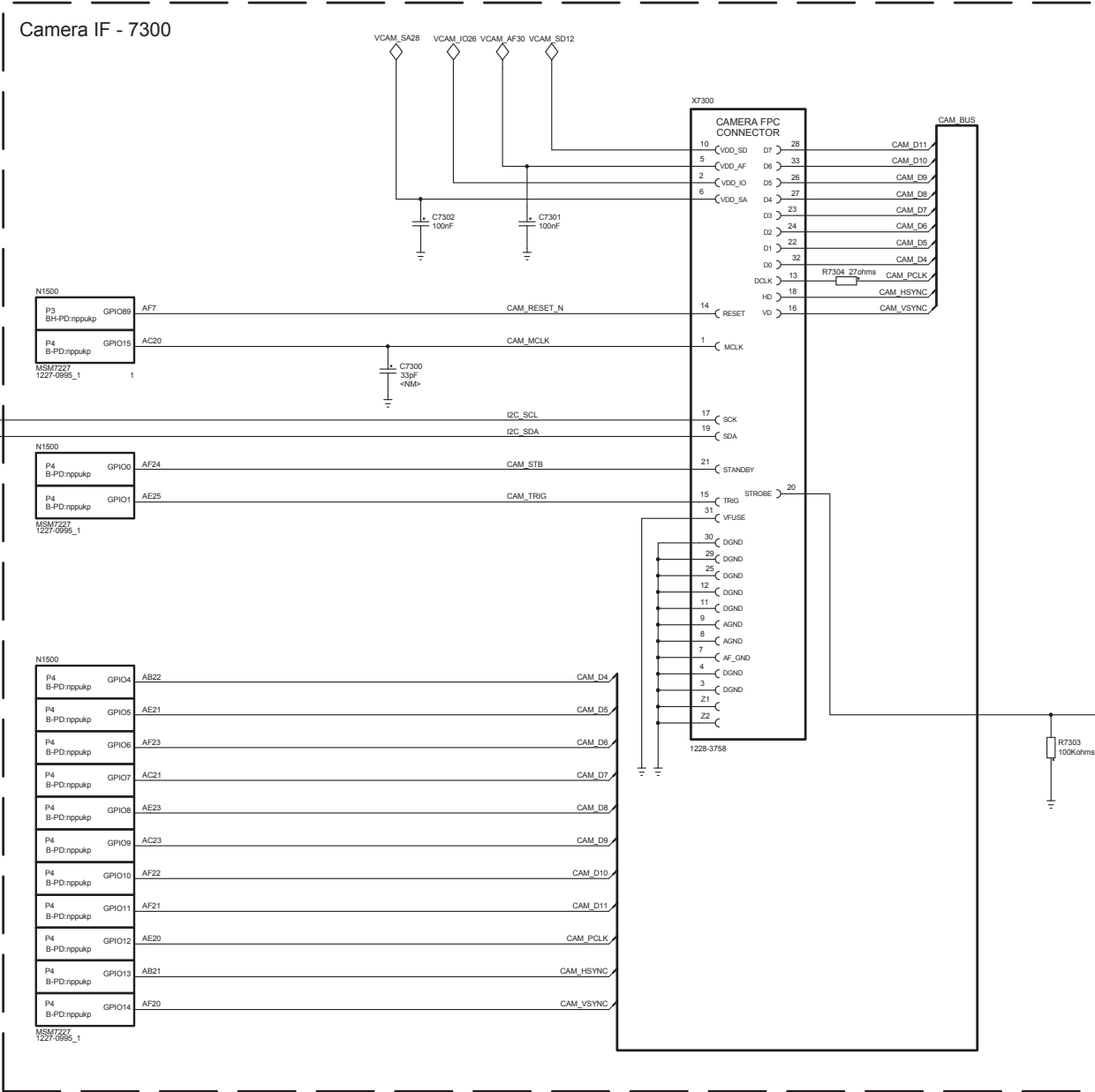






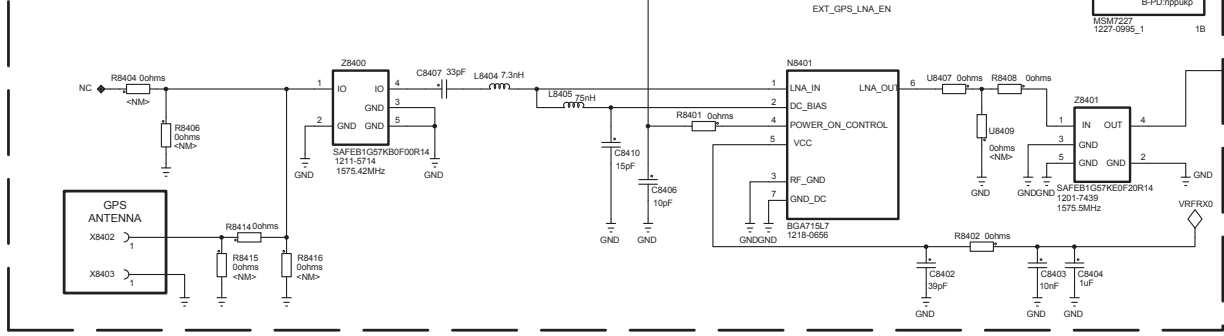
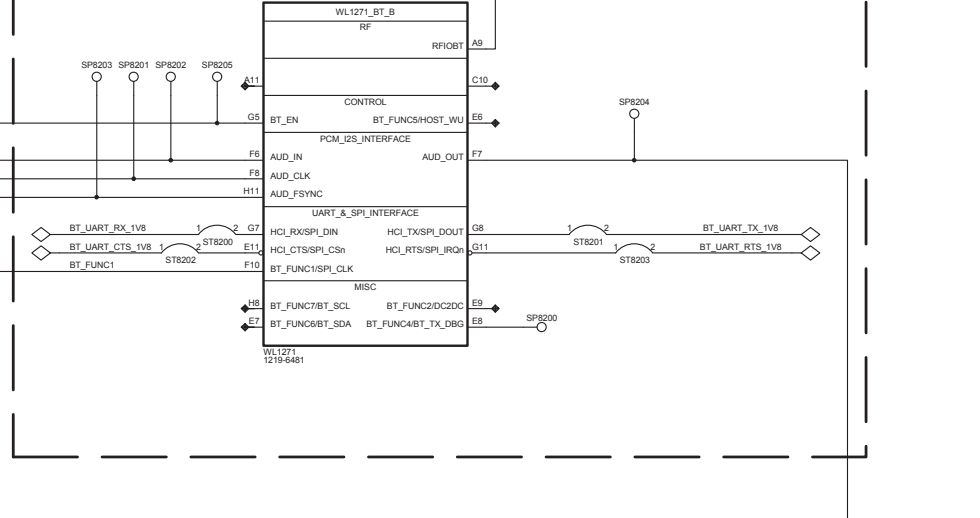
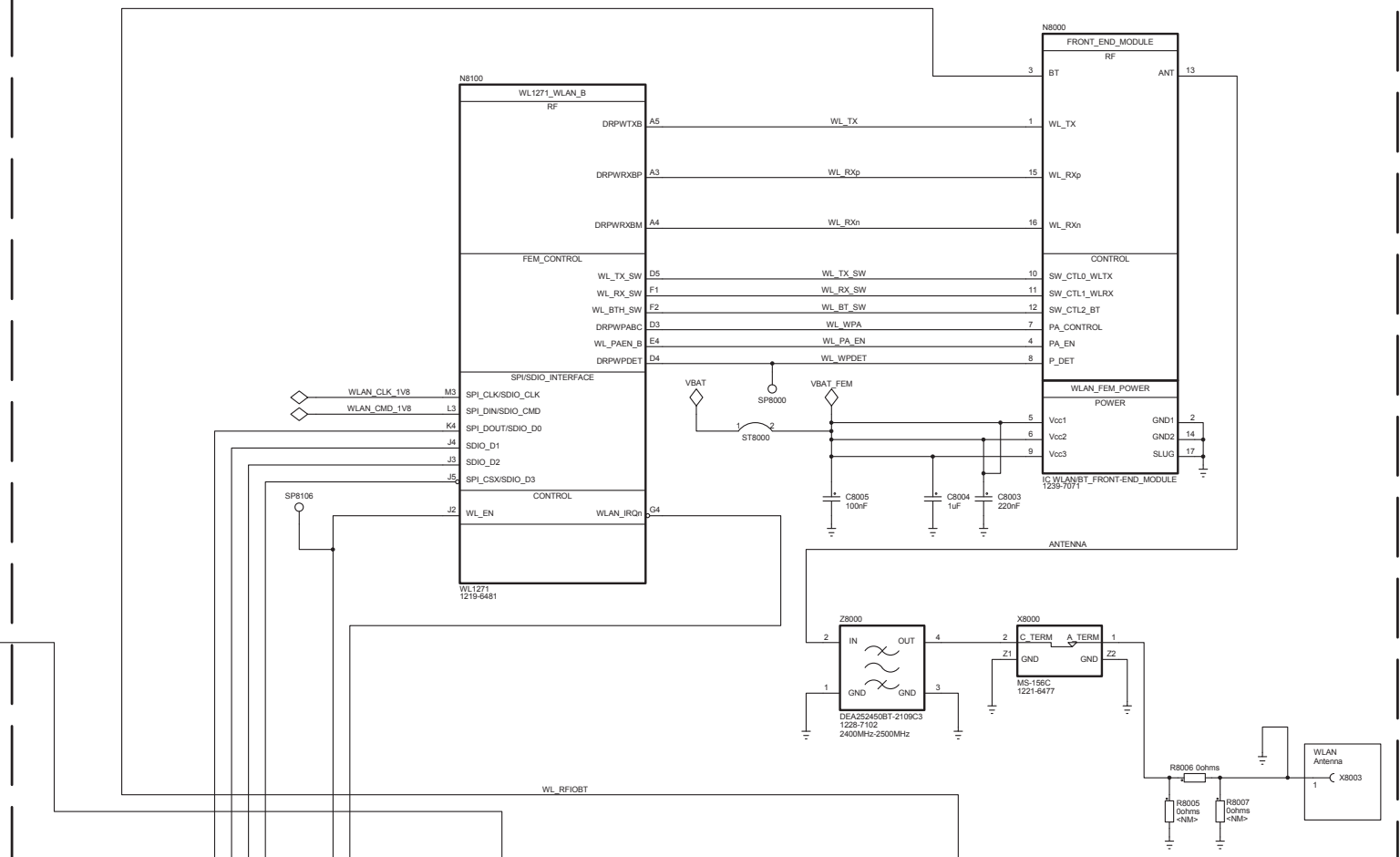
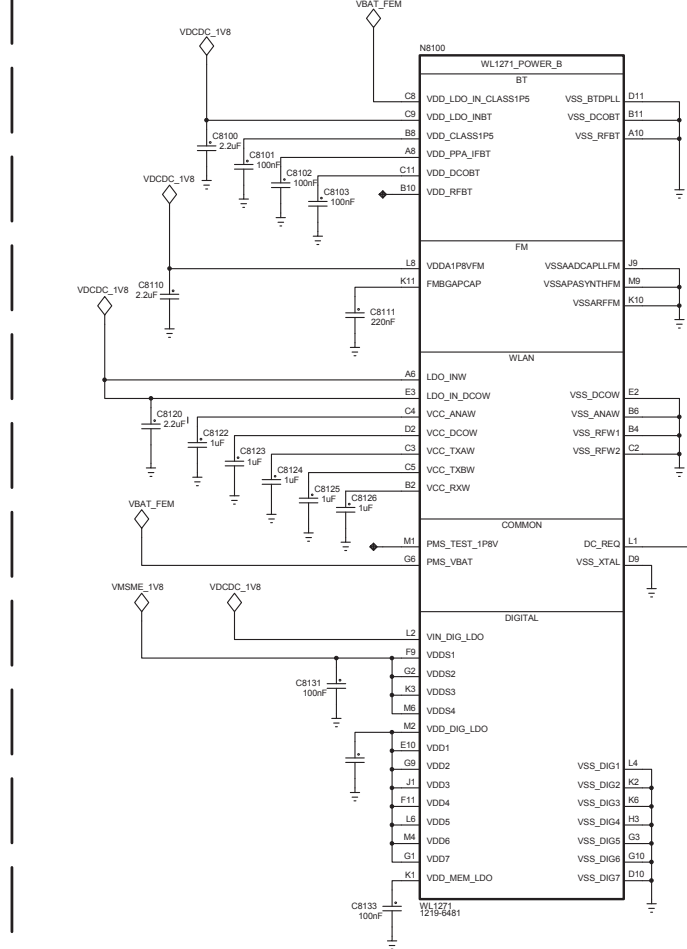


Confidential		CIRCUIT DIAGRAM			
Sony Ericsson		Prepared (also subject responsible if other)			
Block		Document responsible			
Peripheral		Document responsible/Approved			
(Xperia X10 mini pro Mainboard Schematic)		Project/Commercial name		Type nbr/FCC/IC number	
Page		PBA nbr			
Optics		1228-2362			
		Document nr		Rev	Date
		1228-2745		5	
				Sheet	P3



Confidential		CIRCUIT DIAGRAM			
Sony Ericsson		Prepared (also subject responsible if other)			
Block		Document responsible			
Peripheral		Document responsible/Approved			
(Xperia X10 mini pro Mainboard Schematic)		Project/Commercial name		Type nbr/FCC/IC number	
Page		X10 mini pro (1,8)			
Optics		PBA nbr			
		1228-2362			
		Document nr			
		1228-2745			
		Rev		Date	
		5			
		Sheet		P4	

LZF 039 101/F RBL



Revision History

Rev.	Date	Changes / Comments
1	2010-06-28	1 st release